

For resources and information about previous releases, visit [our website](#).

November 23, 2024 Version 2024.25

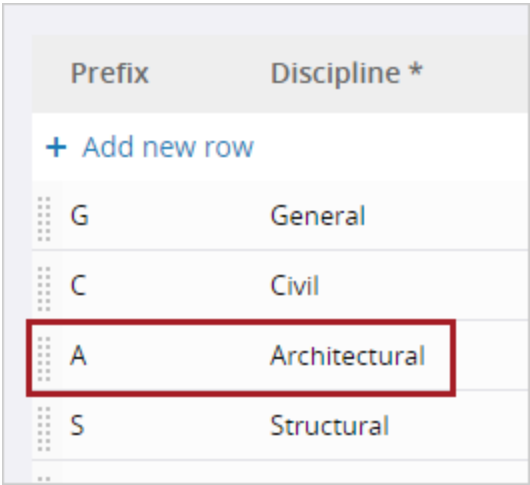
Feature enhancements

Drawings module - Automatic identification of disciplines

When you upload a drawing in the Drawings module, the discipline is found automatically based on the drawing prefix from the [new Discipline page](#) in the settings and the drawing number.

Drawing discipline example

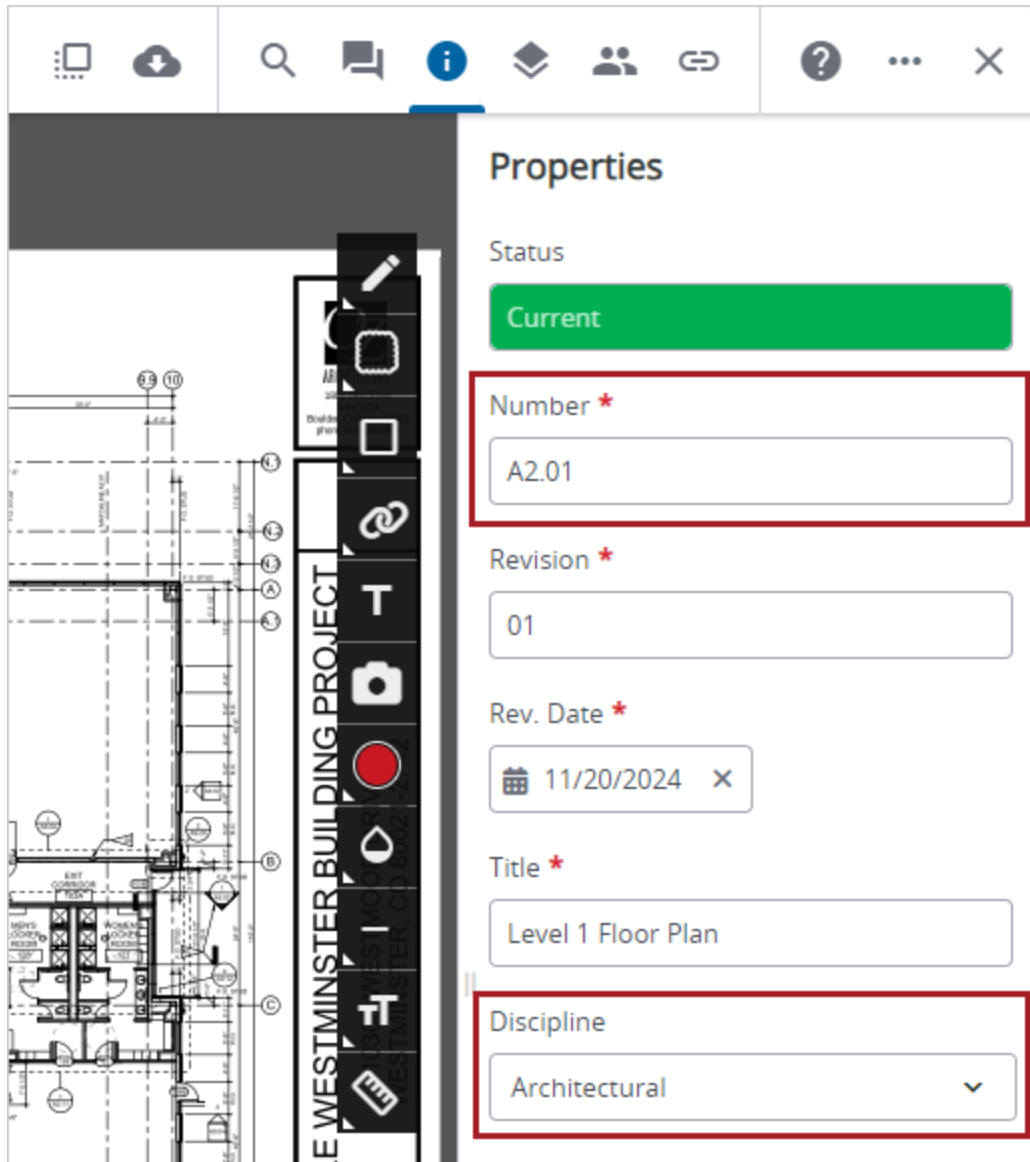
On the Discipline page, the prefix for the Architectural option is A.



Prefix	Discipline *
+ Add new row	
G	General
C	Civil
A	Architectural
S	Structural

Architectural option on the Discipline page

When you upload a drawing with a number that starts with A, the Architectural option is selected automatically in the Discipline field.



**Properties**

Status

Current

Number \*

A2.01

Revision \*

01

Rev. Date \*

11/20/2024

Title \*

Level 1 Floor Plan

Discipline

Architectural

*Discipline selected based on the drawing number*

### Drawing settings - Discipline page

You can customize the list of disciplines and their prefixes on the new Discipline page in the settings.

**Note:** The same list of disciplines is available on the Lookup lists page and the Discipline page, so you can add and update them in either place. On the Discipline page, you can also add a discipline prefix, which is only used for drawings.

In the paid version of ProjectSight, the Discipline page is available at settings (Settings) > **Portfolio settings** or **Project settings** > **Records** > **Drawings** > **Discipline**.

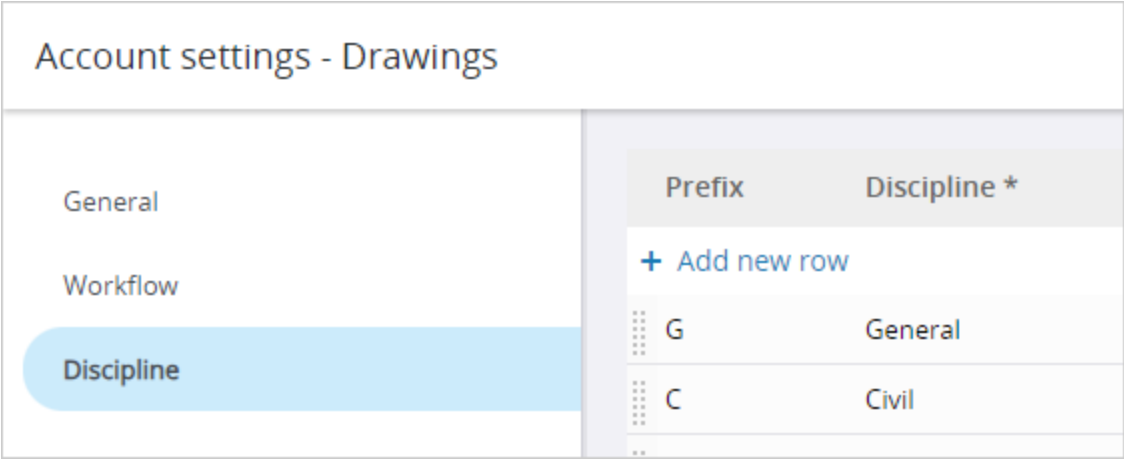
Example

Portfolio settings - Drawings																					
General																					
Custom Fields																					
Field Attributes																					
Nomenclature																					
Notifications																					
Reports																					
Workflow																					
Discipline	<table><tr><th>Prefix</th><th>Discipline *</th></tr><tr><td colspan="2">+ Add new row</td></tr><tr><td>G</td><td>General</td></tr><tr><td>C</td><td>Civil</td></tr><tr><td>A</td><td>Architectural</td></tr><tr><td>S</td><td>Structural</td></tr><tr><td>F</td><td>Fire Protection</td></tr><tr><td>P</td><td>Plumbing</td></tr><tr><td>M</td><td>Mechanical</td></tr><tr><td>E</td><td>Electrical</td></tr></table>	Prefix	Discipline *	+ Add new row		G	General	C	Civil	A	Architectural	S	Structural	F	Fire Protection	P	Plumbing	M	Mechanical	E	Electrical
Prefix	Discipline *																				
+ Add new row																					
G	General																				
C	Civil																				
A	Architectural																				
S	Structural																				
F	Fire Protection																				
P	Plumbing																				
M	Mechanical																				
E	Electrical																				
Default Assignees																					

*Discipline page in the paid version*

In the [free version of ProjectSight](#), the Discipline page is available at settings (Settings) > **Account settings** > **Records** > **Drawings** > **Discipline**.

Example



*Discipline page in the free version*

In new portfolios and projects that you create after this release, an editable set of standard disciplines is available automatically on the Discipline page.

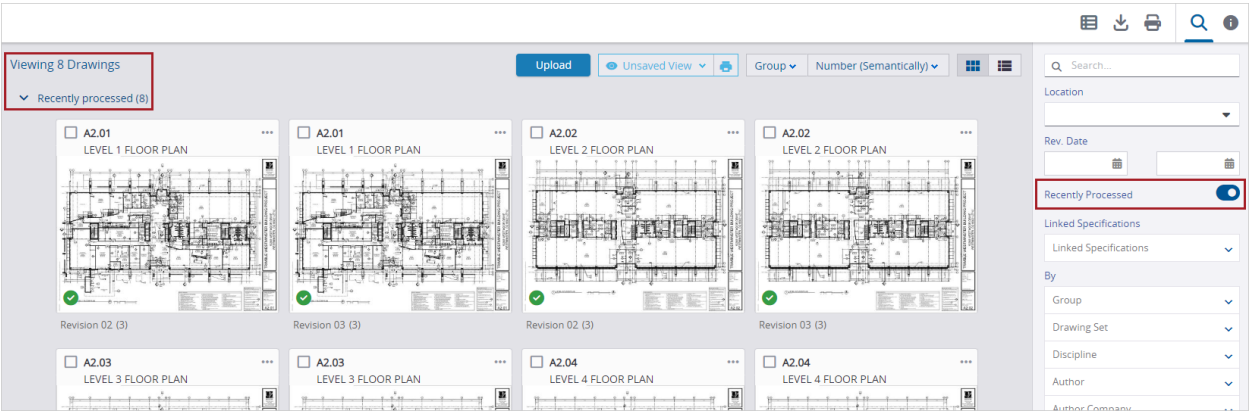
**Standard disciplines**

Prefix	Discipline
A	Architectural
B	Geotechnical
C	Civil
D	Demolition / Process
E	Electrical
F	Fire Protection
G	General
H	Hazardous Materials
I	Interiors
L	Landscape
M	Mechanical
O	Operations
P	Plumbing

Prefix	Discipline
Q	Equipment
R	Resource
S	Structural
T	Telecommunications
V	Survey / Mapping
W	Distributed Energy
X	Other
Z	Contractor / Shop Drawings

Drawings module - Recently processed drawings

If you only want to see the drawings that were uploaded in the last 24 hours, you can turn on the Recently Processed toggle in the Search panel.



*Filtered view that shows only the recently processed drawings*

Resolved issues

- When a project contains thousands of drawings, punch item annotations are displayed correctly. (CN 03894192 / PS-53646)
- In the Project form, the Approximate Contract Value field is available. (CN 03907793 / PS-53954)
- When a .docx, .xlsx, or .pptx file is uploaded and linked to a labor card, the file can be open successfully. (CN 03909561 / PS-54005)
- In the Drawings module, drawings can be uploaded from Trimble Connect. (CN 03912478 / PS-54074)

- When a project contains thousands of drawings, the list of drawings is loaded within a reasonable time. (CN 03925181 / PS-54378)

## November 19, 2024 Version 2024.24

### Resolved issues

- When the main contact is updated, it's only changed for that project. The main contact is also updated in the Main column of the project's team members grid. (CN 03907881 / PS-53958)
- In the Project form, the fields for legal documents have been expanded so that the information is more visible. (CN 03910944 / PS-54032)
- For transmittal courtesy copies, the distribution list is displayed consistently from the Add button in the Courtesy Copies section. (CN 03913491 / PS-54089)
- When the index panel is open in the drawing viewer, a gray space is no longer displayed at the bottom of the viewer. (CN 03913576 / PS-54096)
- On the project selection page, the project prefix is included in the Number column of the list view. (CN 03913579 / PS-54097)
- The label for the Project Location (Project form) / Address (project home page) field can be changed in the nomenclature settings. (CN 03915410 / PS-54165)
- When extra project fields are set as required, a project can be created successfully. (CN 03916399 / PS-54183)
- When a company field is opened, the list is filtered based on the selection in the related company field. (CN 03921011 / PS-54280)
- When the Prefix field is hidden in the Project form, the labels are aligned correctly for the Sequence and Suffix fields. (CN 03921015 / PS-54281)
- On the project selection page, the project tile displays a full ring when the Work Progress is at 100%. (CN 03925049 / PS-54377)

## November 13, 2024 Version 2024.23.02

### Resolved issues

- When users are invited to a project, they are no longer removed from other projects. (CN 03921021 / PS-54283)

## November 11, 2024

### Feature enhancements

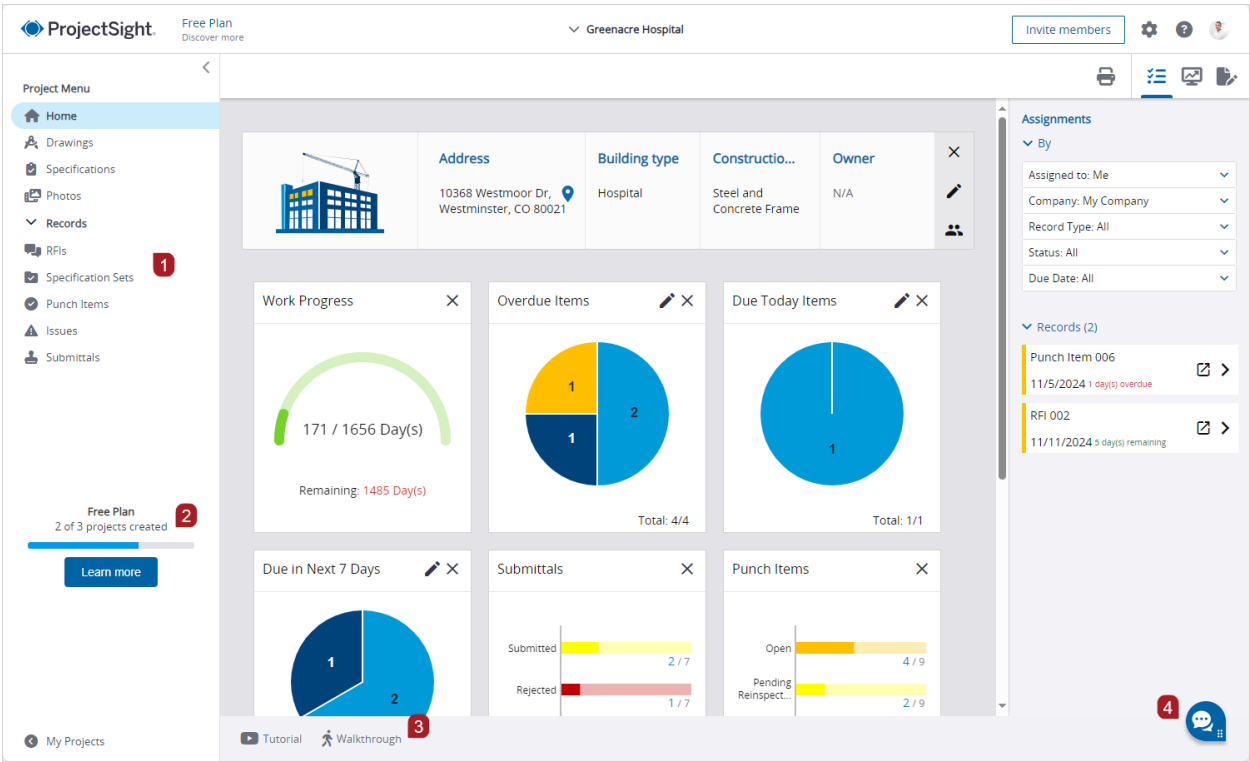
#### ProjectSight free version

*The ProjectSight free version is only available in North America.*

A new version of ProjectSight is now available to make construction project management software accessible to everyone. By centralizing information like drawings, RFIs, and submittals, the free version ensures that everyone on-site can collaborate effectively, keeping your projects running smoothly. Plus, it's incredibly easy to set up and start using, making it perfect for quick, efficient project management and field collaboration.

The free version includes:

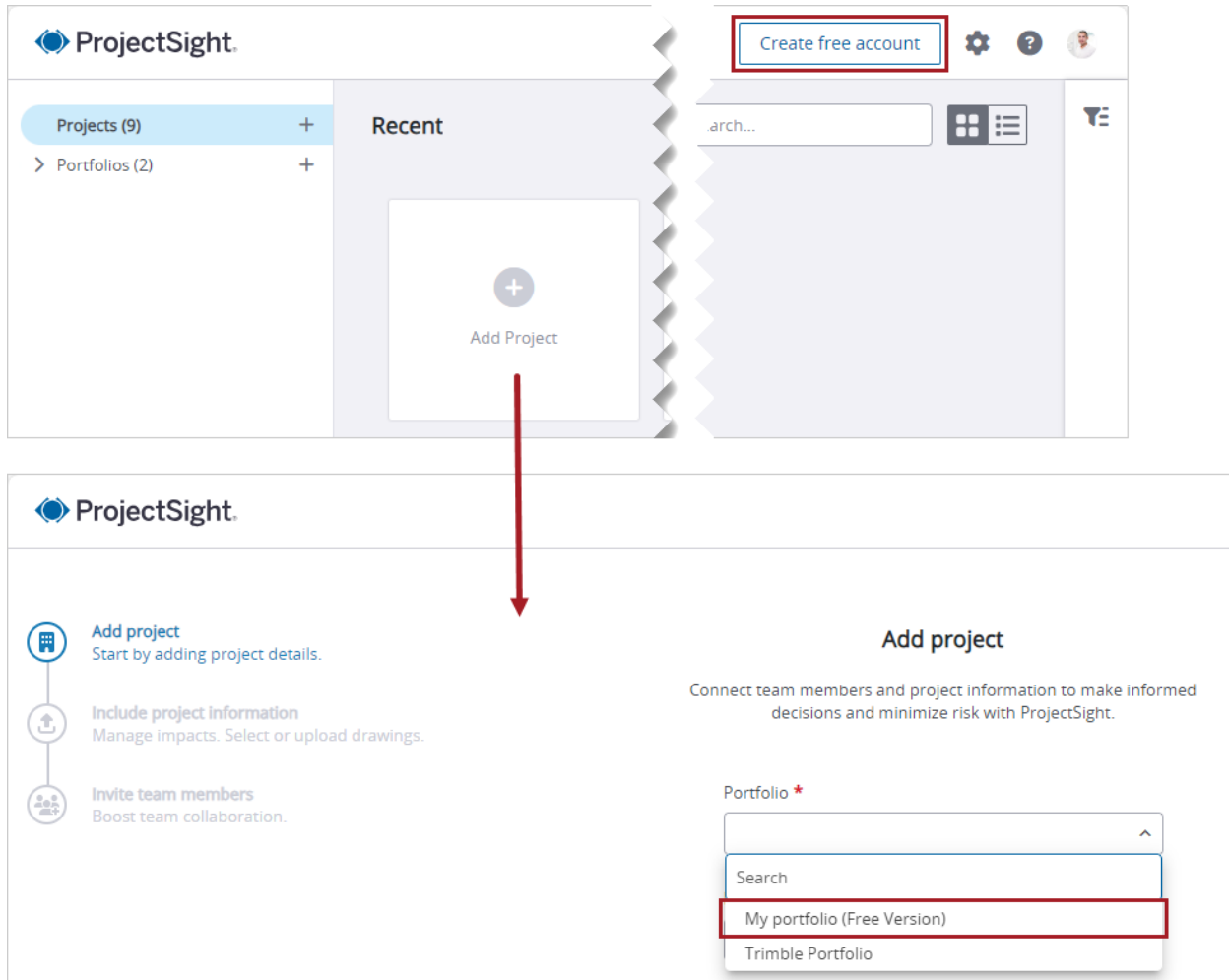
- 1. A core set of features that support documentation and collaboration.
- 2. A limit of 3 free projects.
- 3. Tutorial and walkthrough links to help you get started.
- 4. The beta version of the AI chatbot where you can ask questions about the free version of ProjectSight.



Home page of a free project

Create a free project

If you don't already have a free account, click **Create free account** on the project selection page and set one up. Then you can create a new project and select the **My portfolio (Free Version)** option.



#### Free project option

**Note:** Anyone can create a free project, but only users with paid subscriptions can contact ProjectSight Support. All users, including those with free subscriptions, can join [The Network](#) to connect with other users and find answers to their questions.

**November 6, 2024** Version 2024.23.01

#### Resolved issues

- The team members list can be exported to Excel. (CN 03904644 / PS-53885)
- In the contact dialogs, the Distribution List is scrollable. The search field only applies to contact names, not distribution list names. (CN 03907155 / PS-53940 / CN 03913566 / PS-54093)
- When contracts include a custom lookup list with thousands of items, a contract is opened without a long wait. (CN 03907891 / PS-53959)
- The Submittal [Detailed] report is generated correctly without comments and links. (CN 03912604 / PS-54078)